

Similar to figure

Data sheet

Hydraulic data

Maximum operating pressure PN	10 bar
Min. fluid temperature T_{min}	-20 °C
Max. fluid temperature T_{max}	130 °C

Materials

Pump housing	Grey cast iron
Impeller	PP-LGF50
Shaft	Stainless steel
Bearing	Carbon-graphite

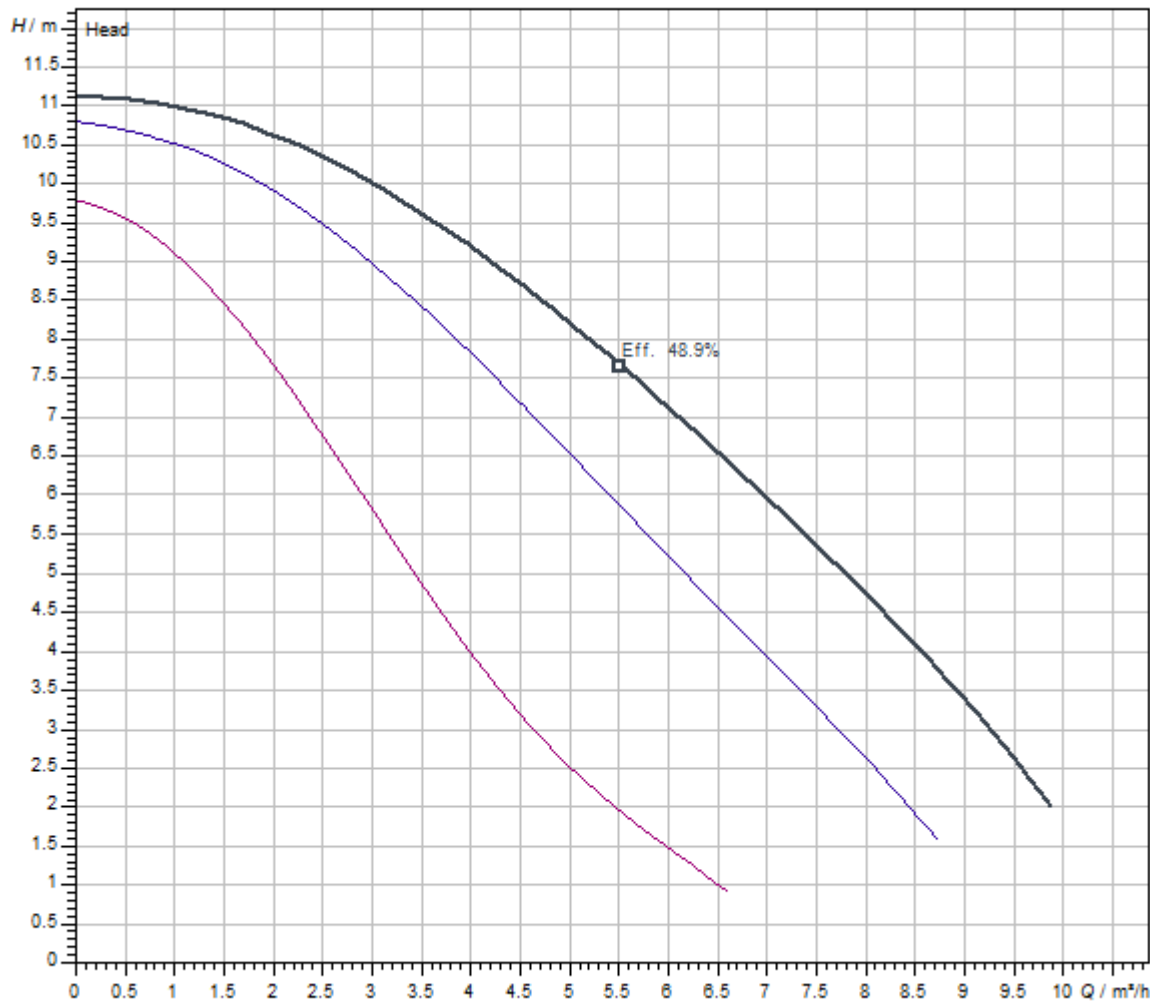
Motor data

Mains connection	1~230 V, 50 Hz
Rated current I_N	1.91 A
Max. speed n_{max}	2700 1/min
Power consumption P1(Q=max.) of selected impeller * number of pumps $P1$	390 W
Emitted interference	EN 61000-6-3
Interference resistance	EN 61000-6-2
Protection class motor	IPX4D

Installation dimensions

Pipe connection on the suction side DN_s	G 1½
Port-to-port length $L0$	180 mm

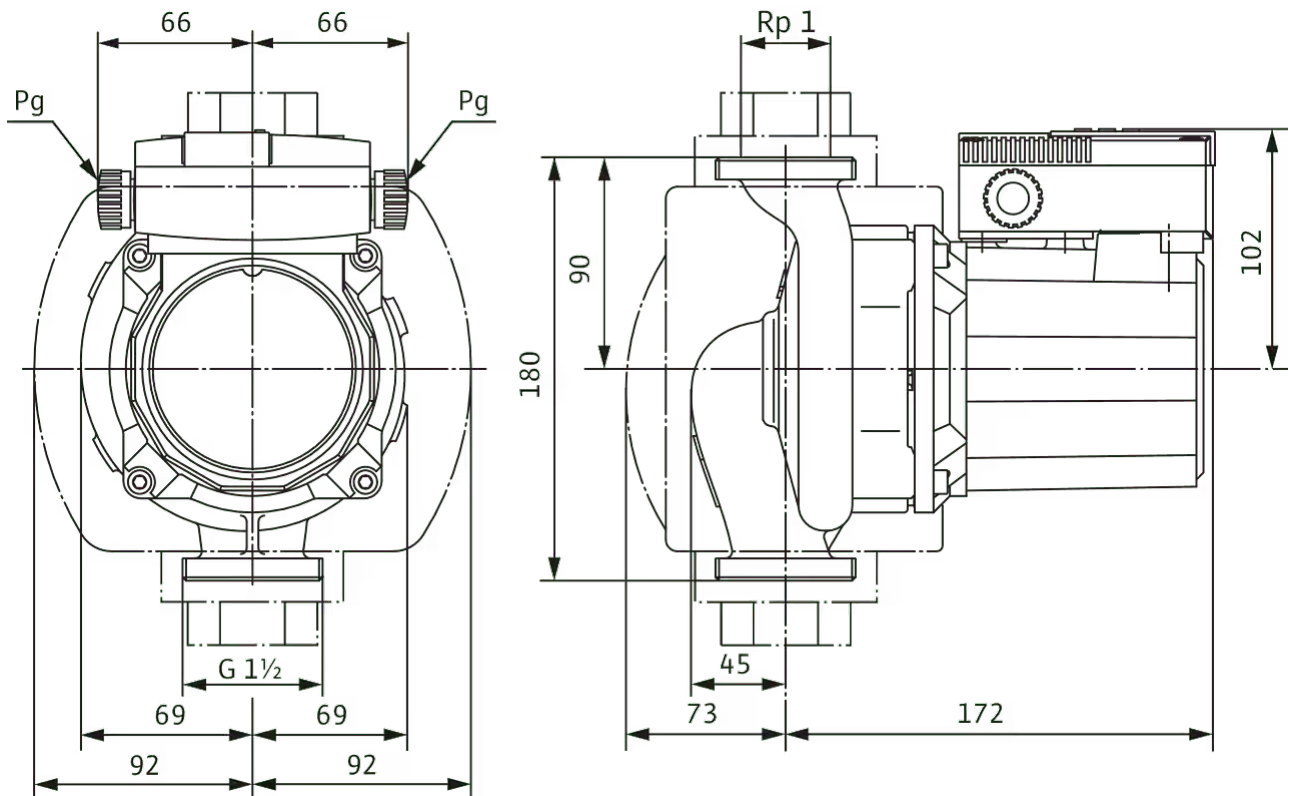
Pump curves



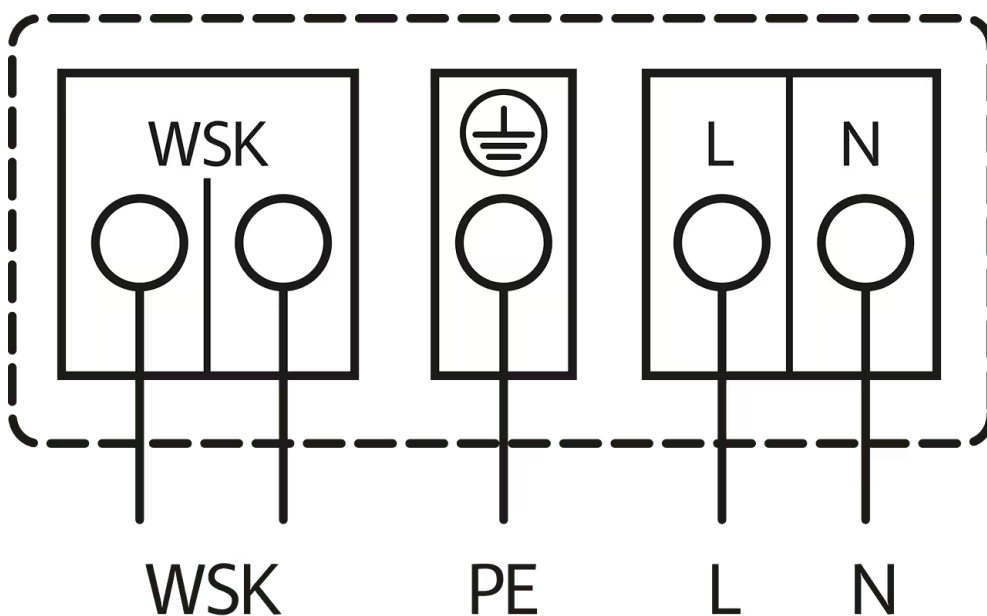
Fluid media	Water 100 %
Fluid temperature <i>T</i>	20.00 °C
speed at duty point <i>n hydr. @ OP</i>	2,650 1/min

Dimensions and dimensions drawings

TOP-S



Wiring diagram



Mains connection, 1~230 V, 50 Hz

WSK = thermal winding contact

Full motor protection at all speed stages with optional tripping unit

SK 602N/SK 622N or other switchgear/control devices with WSK connection option

Triggering: External tripping at switchgear/control device

Reset: Automatic fault acknowledgement after cooling off of the motor

Automatic

Ordering information

Product data

Brand	Wilo
Product description	TOP-S 25/10 (1~230 V, PN 10)
Article number	2061962 ↗
EAN number	4016322892007
Colour	green/black
Minimum order quantity	1
Date of sales availability	2010-01-01

Packaging

Packaging type	Cardboard box
Packaging property	Transport packaging
Pieces per pallet	96
Number per layer	16

Dimension, weight

Length with packaging	270 mm
Length <i>L</i>	180 mm
Height with packaging	215 mm
Height <i>H</i>	245 mm
Width with packaging	178 mm
Width <i>W</i>	184 mm
Gross weight, approx. <i>m</i>	7.1 kg
Net weight, approx. <i>m</i>	6.2 kg

Tender text

Can be used for hot-water heating systems of all kinds, industrial circulation systems, air-conditioning systems and closed cooling circuits.

Glandless circulator with screwed or flange connection, preselectable speed stages for power adjustment.

Equipment and function

- > Manual power adjustment with 3 speed stages
- > Pumps with 1~ motor:
 - > P2 up to 90 W: internal protection against unacceptably high winding temperatures
 - > P2 ≥ 180 W: Full motor protection with thermal winding contacts in conjunction with tripping unit (optional: SK 602N/SK 622N)
- > Pumps with 3~ motor:
 - > P2 up to 90 W: internal protection against unacceptably high winding temperatures
 - > P2 ≥ 180 W: Full motor protection with thermal winding contacts in conjunction with tripping unit (optional: SK 602N/SK 622N)
 - > Mains connection 3~, 230 V with optional switching plug
- > Cathaphoretic-coated pump housing for optimal corrosion protection
- > PN 6/PN 10 combination flange (for DN 40 to DN 65)
- > Thermal insulation shell for heating applications

Operating Data

Min. fluid temperature T_{\min}	-20 °C
Max. fluid temperature T_{\max}	130 °C
Min. ambient temperature T_{\min}	-20 °C
Max. ambient temperature T_{\max}	40 °C
Maximum operating pressure PN	10 bar

Motor data

Emitted interference	EN 61000-6-3
Interference resistance	EN 61000-6-2
Mains connection	1~230 V, 50 Hz
Power consumption $P_{1\max}$	390 W
Max. speed n_{\max}	2700 1/min
Rated current I_N	1.91 A
Protection class motor	IPX4D


Materials

Pump housing	Grey cast iron
Impeller	PP-LGF50
Shaft	Stainless steel
Bearing	Carbon-graphite

Installation dimensions

Pipe connection on the suction side DN_s	G 1½
Pipe connection on the discharge side DN_d	G 1½
Port-to-port length L_0	180 mm

Ordering information

Brand	Wilo
Product description	TOP-S 25/10 (1~230 V, PN 10)
Net weight, approx. m	6.2 kg
Article number	2061962 

Installation type

Continuous, infinitely variable control, differential pressure-sensitive SC-HVAC system

Antenna GSM/GPRS

D-network dual-band antenna with 3 m cable	2533862
D-network tri-band antenna 10 m cable	2533863
D-network tri-band antenna 15 m cable	2533864

Outdoor temperature sensor Pt 100

Outdoor temperature sensor Pt 100	2533772
-----------------------------------	---------

DDG impulse selector

DDG impulse selector	2533770
----------------------	---------

Communication module LON (SC)

Communication module LON (SC)	2538243
-------------------------------	---------

SC communication module BACnet

SC-communication module BACnet MS/TP (slave)	2538242
--	---------

Communication module GSM (SC)

Communication module GSM (SC)	2542216
-------------------------------	---------

Pump signalling module

Signalling module pump 1-2	2533812
Signalling module pump 3-6	2533836

SC-HVAC signal board

SC-HVAC signal board	2119646
----------------------	---------

DDG (4-20mA)

Wilo-DDG 10 Signal Trans.(4-20mA)2G VP.	2136454
Wilo-DDG 100 Signal Trans.(4-20mA)	2211740
Wilo-DDG 20 Signal Trans.(4-20mA)2G VP.	2136456
Wilo-DDG 40 Signal Trans.(4-20mA)2G VP.	2136458
Wilo-DDG 60 Signal Trans.(4-20mA)2G VP.	2136460

DDG transducer

DDG transducer	501771990
----------------	-----------

DDG power supply unit

--	--

DDG power supply unit	501865293
-----------------------	-----------

PTC thermistor tripping unit

PTC thermistor tripping unit	509275993
------------------------------	-----------

Continuous, infinitely variable control, temperature-dependent SC-HVAC system

Antenna GSM/GPRS

D-network dual-band antenna with 3 m cable	2533862
D-network tri-band antenna 10 m cable	2533863
D-network tri-band antenna 15 m cable	2533864

Outdoor temperature sensor Pt 100

Outdoor temperature sensor Pt 100	2533772
-----------------------------------	---------

Communication module LON (SC)

Communication module LON (SC)	2538243
-------------------------------	---------

SC communication module BACnet

SC-communication module BACnet MS/TP (slave)	2538242
--	---------

Communication module GSM (SC)

Communication module GSM (SC)	2542216
-------------------------------	---------

Pump signalling module

Signalling module pump 1-2	2533812
Signalling module pump 3-6	2533836

SC-HVAC signal board

SC-HVAC signal board	2119646
----------------------	---------

PTC thermistor tripping unit

PTC thermistor tripping unit	509275993
------------------------------	-----------

Mechanical accessories

Pipe installation

Screwed connections/adapters

Screwed connection Rp 1 x G 1½, 72 Set	112047298
Screwed connection Rp 1 x G 1½, 1 Set	4092741
Adapter G 1½/G 2	4105914

Pipe installation, adapter fitting

Flanged rings RF

Flanged ring RF 7, PN6	110628790
Flanged ring RF 9, PN6	110679395
Flanged ring RF 13, PN6	110679498
Flanged ring RF 10, PN6	110851499

Threaded adapter R

Threaded adapter R 2, GG	110626790
Threaded adapter R 6, GG	110678493
Threaded adapter R 1, GG	110786891
Threaded adapter R 7, GG	110787094
Threaded adapter R 24, GG	110880596

Electrical accessories

Pump control/accessories

Antenna GSM/GPRS

D-network dual-band antenna with 3 m cable	2533862
D-network tri-band antenna 10 m cable	2533863
D-network tri-band antenna 15 m cable	2533864
SMA/FME adapter	2545548

BMS base module

BMS base module	2533800
-----------------	---------

CC communication module BACnet

CC-communication module BACnet MS/TP (slave)	2537050
CC-communication module BACnet IP (slave)	2537051

Communication module CC

CC communication module	2533850
-------------------------	---------

Communication module GSM

GSM module	2533861
------------	---------

Communication module GSM (SC)

Communication module GSM (SC)	2542216
-------------------------------	---------

Communication module LON

Communication module LON	2533868
--------------------------	---------

Communication module LON (SC)

Communication module LON (SC)	2538243
-------------------------------	---------

Communication module ModBus

Communication module Modbus RTU	2533869
---------------------------------	---------

Communication module Profibus

Communication module Profibus DP	2533866
----------------------------------	---------

Connection cable control modules/signalling modules

Control modules connecting cable	2533790
Signalling modules connecting cable	2533890

DDG impulse selector

DDG impulse selector	2533770
Outdoor temperature sensor Pt 100	
Outdoor temperature sensor Pt 100	2533772
Pump signalling module	
Signalling module pump 1-2	2533812
Signalling module pump 3-6	2533836
SC communication module BACnet	
SC-communication module BACnet MS/TP (slave)	2538242
SC-HVAC signal board	
SC-HVAC signal board	2119646
Signal converter retrofit kit	
Signal converter 0-10 V / 0-20 mA	2534992
Temperature module	
Temperature module for systems with 4-6 pumps	2533771
Temperature module for systems with 1-3 pumps	2534991
Differential pressure detection	
DDA	
Display unit for diff. pressure DDA 16	502856499
Display unit for diff. pressure DDA 6	503003598
Display unit for diff. pressure DDA 40	503217592
DDG (4-20mA)	
Wilo-DDG 10 Signal Trans.(4-20mA)2G VP.	2136454
Wilo-DDG 20 Signal Trans.(4-20mA)2G VP.	2136456
Wilo-DDG 40 Signal Trans.(4-20mA)2G VP.	2136458
Wilo-DDG 60 Signal Trans.(4-20mA)2G VP.	2136460
Wilo-DDG 100 Signal Trans.(4-20mA)	2211740
DDG power supply unit	
DDG power supply unit	501865293
DDG transducer	
DDG transducer	501771990

Motor protection

PTC thermistor tripping unit

PTC thermistor tripping unit	509275993
------------------------------	-----------

SK 602N

Switchgear SK 602N	2120444
--------------------	---------

SK 622N

Switchgear SK 622N	2120445
--------------------	---------

Maintenance/replacement

Rmot Top-S

Spare motor TOP-S/-SD 30/10 EM RMOT.	2046663
Spare motor TOP-S/-SD 40/7 EM RMOT.	2046665
Spare motor TOP-S 50/4 EM RMOT.	2046668
Spare motor TOP-S/-SV 25/7 EM RMOT.	2048334
Spare motor TOP-S/-SV 25/7 DM RMOT.	2048335
Spare motor TOP-S/-SD/-SV 30/7 EM RMOT.	2048336
Spare motor TOP-S/-SD/-SV 30/7 DM RMOT.	2048337
Spare motor TOP-S/-SV 40/4 EM RMOT.	2048338
Spare motor TOP-S/-SV 40/4 DM RMOT.	2048339
Spare motor TOP-SD 40/3 DM RMOT.	2063749
Spare motor TOP-S/-SD 30/5 DM RMOT.	2084786
Spare motor TOP-S 30/4 EM RMOT.	2085573
Spare motor TOP-S 30/4 DM RMOT.	2085574
Spare motor TOP-SD 40/3 EM RMOT.	2086903
Spare motor TOP-S/-SD 30/5 EM RMOT.	2110033
Spare motor TOP-S 25/10 EM RMOT.	2117529
Spare motor TOP-S 25/5 EM RMOT.	2122048
Spare motor TOP-S 25/5 DM RMOT.	2122049
Spare motor TOP-S25/10 DM RMOT.	2165575
Spare motor TOP-S/SD30/10 DM RMOT.	2165576
Spare motor TOP-S/SD40/7 DM RMOT.	2165577
Spare motor TOP-S/SD40/10 EM RMOT.	2165578
Spare motor TOP-S/SD40/10 DM RMOT.	2165579
Spare motor TOP-S/SD40/15 EM 2-SPEEDS RMOT.	2165580
Spare motor TOP-S/SD40/15 DM PN6/10 RMOT.	2165581

Spare motor TOP-S50/4 DM RMOT.	2165582
Spare motor TOP-S/SD50/7 EM RMOT.	2165584
Spare motor TOP-S/SD50/7 DM RMOT.	2165585
Spare motor TOP-S/SD50/10 EM 2-SPEEDS RMOT.	2165586
Spare motor TOP-S/SD50/10 DM RMOT.	2165587
Spare motor TOP-S/SD50/15 DM RMOT.	2165588
Spare motor TOP-S65/7 EM RMOT.	2165590
Spare motor TOP-S65/7 DM RMOT.	2165592
Spare motor TOP-S/SD65/10 EM RMOT.(450W)	2165594
Spare motor TOP-S/SD65/10 DM RMOT.(450W)	2165595
Spare motor TOP-S/SD65/13 DM RMOT.	2165597
Spare motor TOP-S/SD65/15 DM RMOT.	2165598
Spare motor TOP-S/SD80/7 EM RMOT.(450W)	2165599
Spare motor TOP-S80/7 DM RMOT.(450W)	2165601
Spare motor TOP-S/SD80/10 DM RMOT.	2165603
Spare motor TOP-S/SD80/15 DM RMOT.	2165604
Spare motor TOP-S/SD80/20 DM RMOT.	2165605
Spare motor TOP-S100/10 DM RMOT.	2165606
Spare motor TOP-S/SD/SV65/10 DM RMOT.	2165596
Spare motor TOP-S/SD80/7 EM 2-SPEED RMOT	2165600
Spare motor TOP-S80/7 DM RMOT.	2165602

Services

With Wilo as your partner, you can not only be sure of choosing high-quality product solutions, but also of benefiting from a comprehensive, worry-free package of well thought-out services. We collaborate to develop a service concept tailored to your individual needs; with our expertise and personal consultancy, we make sure that the operation of your systems is as energy-efficient, reliable and economical as possible. All the while our competent Wilo service technicians are ready to assist you with fast, reliable and on-time support.

Recommended services

Wilo-Live Assistant Service	2216415
System Optimisation Glandless pumps	2219250
Energy Solutions Glandless pumps	2219285

More suitable services

Extended Warranty Glandless pumps	2219589
Supervision Glandless pumps	2219320
Installation Glandless pumps	2219355
Commissioning Glandless pumps	2219390
Maintenance BASIC Glandless pumps	2219530
Maintenance COMFORT Glandless pumps	2219416
Maintenance PREMIUM Glandless pumps	2219545
Repair Glandless pumps	2219609