



Similar to figure

Data sheet

Hydraulic data

Maximum operating pressure $P_N$	10 bar
Min. fluid temperature $T_{min}$	-20 °C
Max. fluid temperature $T_{max}$	130 °C

Materials

Pump housing	Grey cast iron
Impeller	PP-LGF50
Shaft	Stainless steel
Bearing	Carbon-graphite

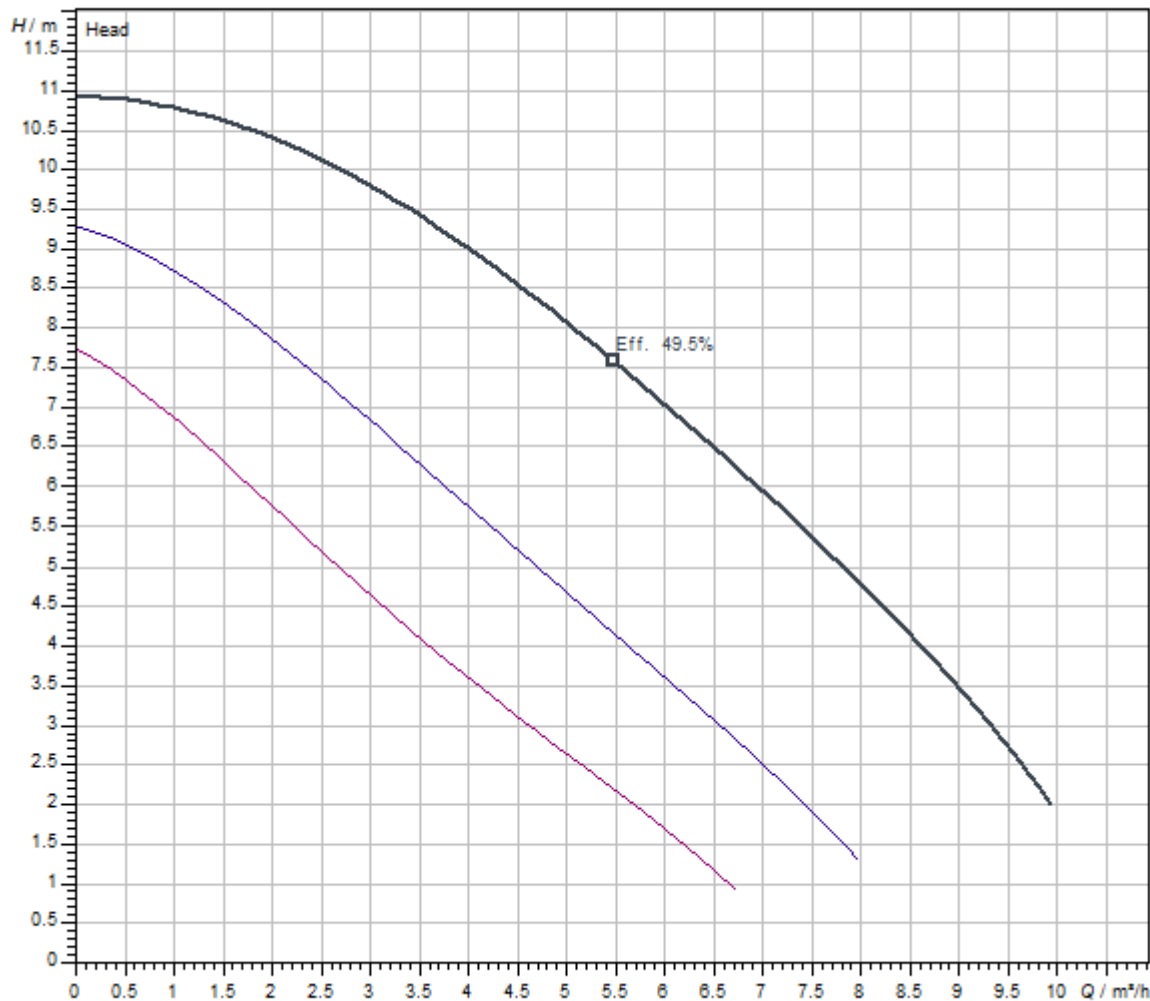
Motor data

Mains connection	3~400 V, 50 Hz
Rated current $I_N$	0.78 A
Max. speed $n_{max}$	2650 1/min
Power consumption $P_1$ (Q=max.) of selected impeller * number of pumps $P_1$	380 W
Emitted interference	EN 61000-6-3
Interference resistance	EN 61000-6-2
Protection class motor	IPX4D

Installation dimensions

Pipe connection on the suction side $DN_s$	G 2
Port-to-port length $L_0$	180 mm

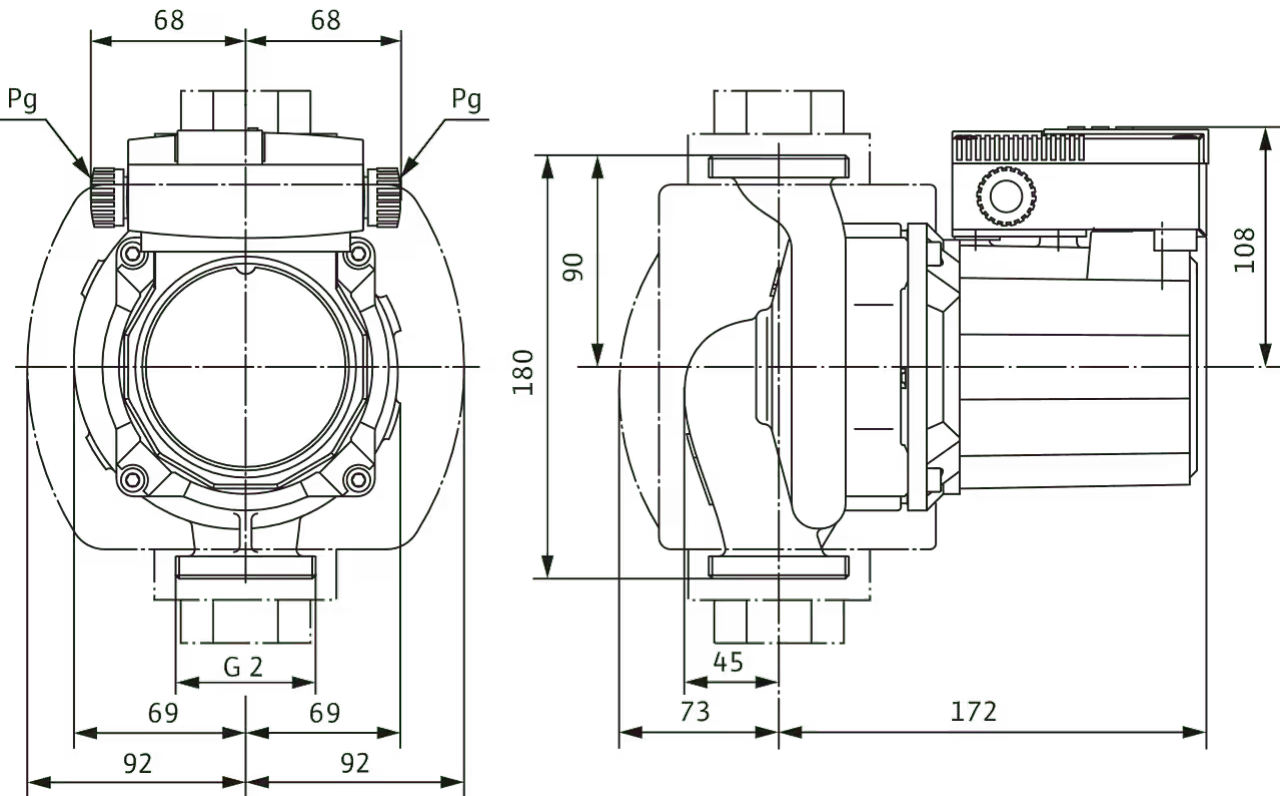
Pump curves

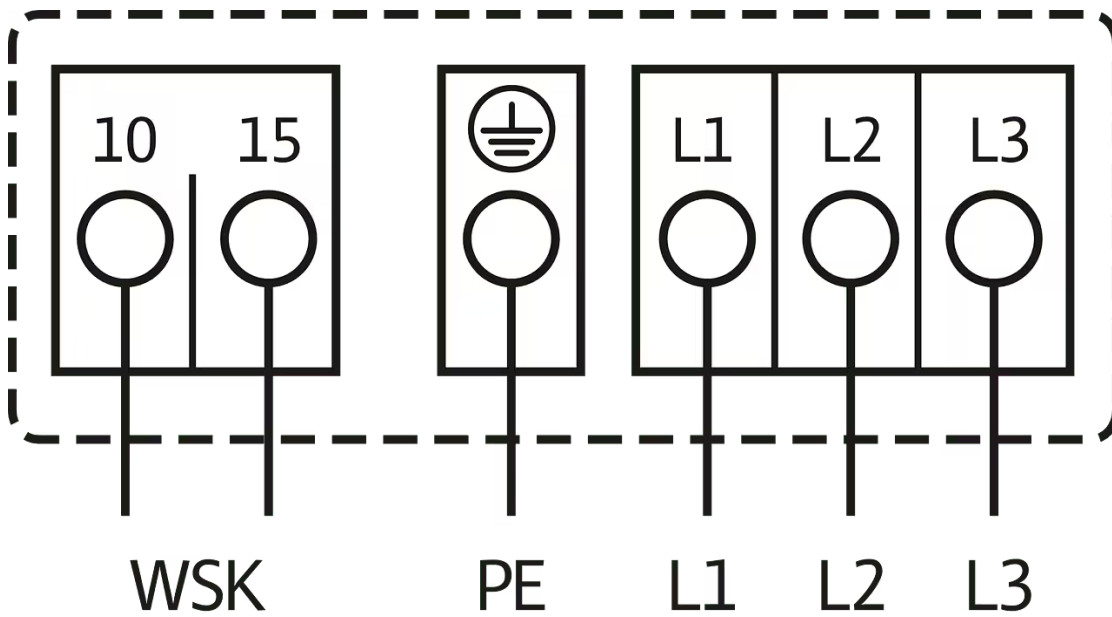


Fluid media	Water 100 %
Fluid temperature T	20.00 °C
speed at duty point <i>n</i> hydr. @ OP	2,621 1/min

Dimensions and dimensions drawings

TOP-S



**Wiring diagram**

**Mains connection, 3~400 V, 50 Hz**

3~230 V, 50 Hz (optional with switching plug 3~230 V)

WSK = thermal winding contact

Full motor protection at all speed stages with optional tripping unit


SK 602N/SK 622N or other switchgear/control devices with WSK connection option

Triggering: External tripping at switchgear/control device

Reset: Automatic fault acknowledgement after cooling off of the motor

Automatic

**Ordering information****Product data**

Brand	Wilo
Product description	TOP-S 30/10 (3~400/230 V, PN 10)
Article number	<b>2165522</b> 
EAN number	4048482638102
Colour	green/black
Minimum order quantity	1
Date of sales availability	2016-03-01
Previous model article number	2066133
Previous model designation	TOP-S 30/10 (3~400/230 V, PN 10)

**Packaging**

Packaging type	Cardboard box
Packaging property	Transport packaging
Pieces per pallet	96
Number per layer	16

**Dimension, weight**

Length with packaging	270 mm
Length <i>L</i>	180 mm
Height with packaging	215 mm
Height <i>H</i>	245 mm
Width with packaging	178 mm
Width <i>W</i>	184 mm
Gross weight, approx. <i>m</i>	7.2 kg
Net weight, approx. <i>m</i>	6.3 kg

## Tender text

Can be used for hot-water heating systems of all kinds, industrial circulation systems, air-conditioning systems and closed cooling circuits.

Glandless circulator with screwed or flange connection, preselectable speed stages for power adjustment.

## Equipment and function

- > Manual power adjustment with 3 speed stages
- > Pumps with 1~ motor:
  - > P2 up to 90 W: internal protection against unacceptably high winding temperatures
  - > P2  $\geq$  180 W: Full motor protection with thermal winding contacts in conjunction with tripping unit (optional: SK 602N/SK 622N)
- > Pumps with 3~ motor:
  - > P2 up to 90 W: internal protection against unacceptably high winding temperatures
  - > P2  $\geq$  180 W: Full motor protection with thermal winding contacts in conjunction with tripping unit (optional: SK 602N/SK 622N)
  - > Mains connection 3~, 230 V with optional switching plug
- > Cataphoretic-coated pump housing for optimal corrosion protection
- > PN 6/PN 10 combination flange (for DN 40 to DN 65)
- > Thermal insulation shell for heating applications

## Operating Data

Min. fluid temperature $T_{\min}$	-20 °C
Max. fluid temperature $T_{\max}$	130 °C
Min. ambient temperature $T_{\min}$	-20 °C
Max. ambient temperature $T_{\max}$	40 °C
Maximum operating pressure $PN$	10 bar

## Motor data

Emitted interference	EN 61000-6-3
Interference resistance	EN 61000-6-2
Mains connection	3~400 V, 50 Hz
Power consumption $P_{1\max}$	380 W
Max. speed $n_{\max}$	2650 1/min
Rated current $I_N$	0.78 A
Protection class motor	IPX4D

## Materials

Pump housing	Grey cast iron
Impeller	PP-LGF50
Shaft	Stainless steel
Bearing	Carbon-graphite

## Installation dimensions

Pipe connection on the suction side $DN_s$	G 2
Pipe connection on the discharge side $DN_d$	G 2
Port-to-port length $L_0$	180 mm

## Ordering information

Brand	Wilo
Product description	TOP-S 30/10 (3~400/230 V, PN 10)
Net weight, approx. $m$	6.3 kg
Article number	2165522 

## Mechanical accessories

### Pipe installation

#### Screwed connections/adapters

Screwed connection Rp 1½ x G 2, 48 Set	112047390
Screwed connection Rp 1½ x G 2, 1 Set	4092742

### Pipe installation, adapter fitting

#### Flanged rings RF

Flanged ring RF 1, PN6	110627990
Flanged ring RF 0, PN6	110679796
Flanged ring RF 11, PN6	110679899
Flanged ring RF 2, PN6	110680298
Flanged ring RF 3, PN6	110680596
Flanged ring RF 4, PN6	110680699
Flanged ring RF 4, PN10/16	110680791
Flanged ring RF 8, PN6	110680997
Flanged ring RF 5, PN6	110787197
Flanged ring RF 6, PN6	110787290
Flanged ring RF 5, PN10/16	110791299
Flanged ring RF 6, PN10/16	110791391
Flanged ring RF 12, PN6	110851797

#### Threaded adapter R

Threaded adapter R 8, GG	110627199
Threaded adapter R 9, GG	110627291
Threaded adapter R 10, GG	110627394
Threaded adapter R 14, GG	110627497
Threaded adapter R 11, GG	110627590

## Electrical accessories

### Pump control/accessories

#### Antenna GSM/GPRS

D-network dual-band antenna with 3 m cable	2533862
D-network tri-band antenna 10 m cable	2533863
D-network tri-band antenna 15 m cable	2533864
SMA/FME adapter	2545548

#### BMS base module

BMS base module	2533800
-----------------	---------

#### CC communication module BACnet

CC-communication module BACnet MS/TP (slave)	2537050
CC-communication module BACnet IP (slave)	2537051

#### Communication module CC

CC communication module	2533850
-------------------------	---------

#### Communication module GSM

GSM module	2533861
------------	---------

#### Communication module GSM (SC)

Communication module GSM (SC)	2542216
-------------------------------	---------

#### Communication module LON

Communication module LON	2533868
--------------------------	---------

#### Communication module LON (SC)

Communication module LON (SC)	2538243
-------------------------------	---------

#### Communication module ModBus

Communication module Modbus RTU	2533869
---------------------------------	---------

#### Communication module Profibus

Communication module Profibus DP	2533866
----------------------------------	---------

#### Connection cable control modules/signalling modules

Control modules connecting cable	2533790
Signalling modules connecting cable	2533890

#### DDG impulse selector



DDG impulse selector	2533770
<b>Outdoor temperature sensor Pt 100</b>	
Outdoor temperature sensor Pt 100	2533772
<b>Pump signalling module</b>	
Signalling module pump 1-2	2533812
Signalling module pump 3-6	2533836
<b>SC communication module BACnet</b>	
SC-communication module BACnet MS/TP (slave)	2538242
<b>SC-HVAC signal board</b>	
SC-HVAC signal board	2119646
<b>Signal converter retrofit kit</b>	
Signal converter 0-10 V / 0-20 mA	2534992
<b>Temperature module</b>	
Temperature module for systems with 4-6 pumps	2533771
Temperature module for systems with 1-3 pumps	2534991
<b>Differential pressure detection</b>	
<b>DDA</b>	
Display unit for diff. pressure DDA 16	502856499
Display unit for diff. pressure DDA 6	503003598
Display unit for diff. pressure DDA 40	503217592
<b>DDG (4-20mA)</b>	
Wilo-DDG 10 Signal Trans.(4-20mA)2G VP.	2136454
Wilo-DDG 20 Signal Trans.(4-20mA)2G VP.	2136456
Wilo-DDG 40 Signal Trans.(4-20mA)2G VP.	2136458
Wilo-DDG 60 Signal Trans.(4-20mA)2G VP.	2136460
Wilo-DDG 100 Signal Trans.(4-20mA)	2211740
<b>DDG power supply unit</b>	
DDG power supply unit	501865293
<b>DDG transducer</b>	
DDG transducer	501771990

Motor protection

PTC thermistor tripping unit

PTC thermistor tripping unit	509275993
------------------------------	-----------

SK 602N

Switchgear SK 602N	2120444
--------------------	---------

SK 622N

Switchgear SK 622N	2120445
--------------------	---------

Plug

Switching plug N

Switching plug "N"	2040655
--------------------	---------

## Services

With Wilo as your partner, you can not only be sure of choosing high-quality product solutions, but also of benefiting from a comprehensive, worry-free package of well thought-out services. We collaborate to develop a service concept tailored to your individual needs; with our expertise and personal consultancy, we make sure that the operation of your systems is as energy-efficient, reliable and economical as possible. All the while our competent Wilo service technicians are ready to assist you with fast, reliable and on-time support.

### Recommended services

Wilo-Live Assistant Service	2216415
System Optimisation Glandless pumps	2219250
Energy Solutions Glandless pumps	2219285

### More suitable services

Extended Warranty Glandless pumps	2219589
Supervision Glandless pumps	2219320
Commissioning Glandless pumps	2219390
Maintenance BASIC Glandless pumps	2219530
Maintenance COMFORT Glandless pumps	2219416
Maintenance PREMIUM Glandless pumps	2219545
Repair Glandless pumps	2219609